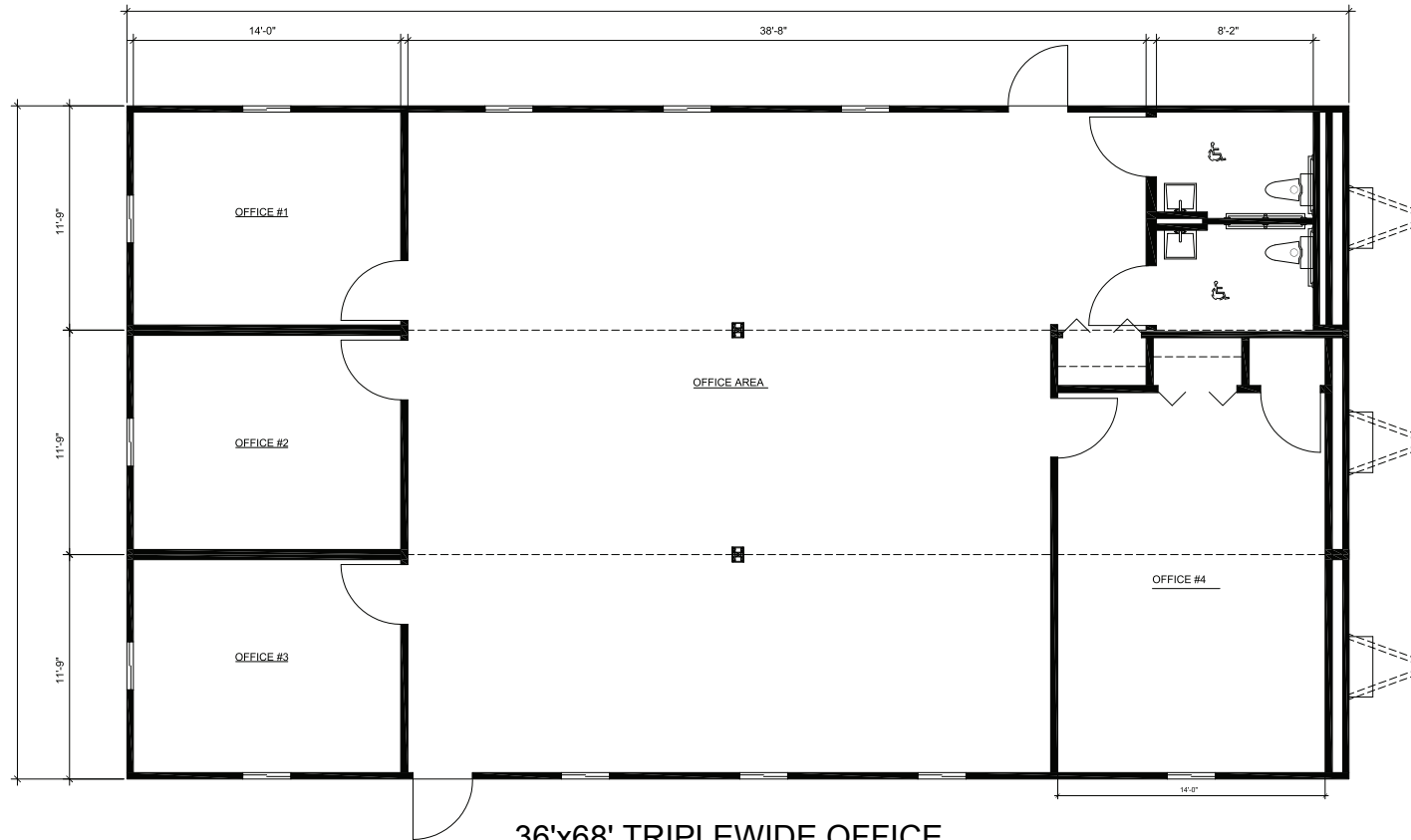


Floor plans and specifications may vary based on availability.



36'x68' TRIPLEWIDE OFFICE

TYPICAL SPECIFICATIONS

Size(s)

- 68' Long (including hitch)
- 64' Floor size
- 36' Wide
- 8' Ceiling height

Interior Finish

- Paneled or vinyl covered walls
- Vinyl tiled floors or carpet
- Gypsum ceiling
- Private office(s)
- Restroom(s) available

Electric

- Fluorescent ceiling lights
- Breaker panel (sub 125)(main 225)
- Phone/Data rough-in

Windows/Doors

- Horizontal slider windows
- Two exterior doors with standard locks

Heating and Cooling

- Central HVAC

Exterior Finish/Frame

- Aluminum or T1-11 wood siding
- I-Beam frame
- Standard drip rail gutters
- Exterior light(s)

The use of this drawing for any means other than that intended is strictly prohibited without prior written consent of an authorized McDonald Modular representative